

# *Waynesboro South River Greenway*

## *Start Small: Dream Big*



C. Dwayne Jones  
City of Waynesboro - VA  
Director of Parks & Recreation

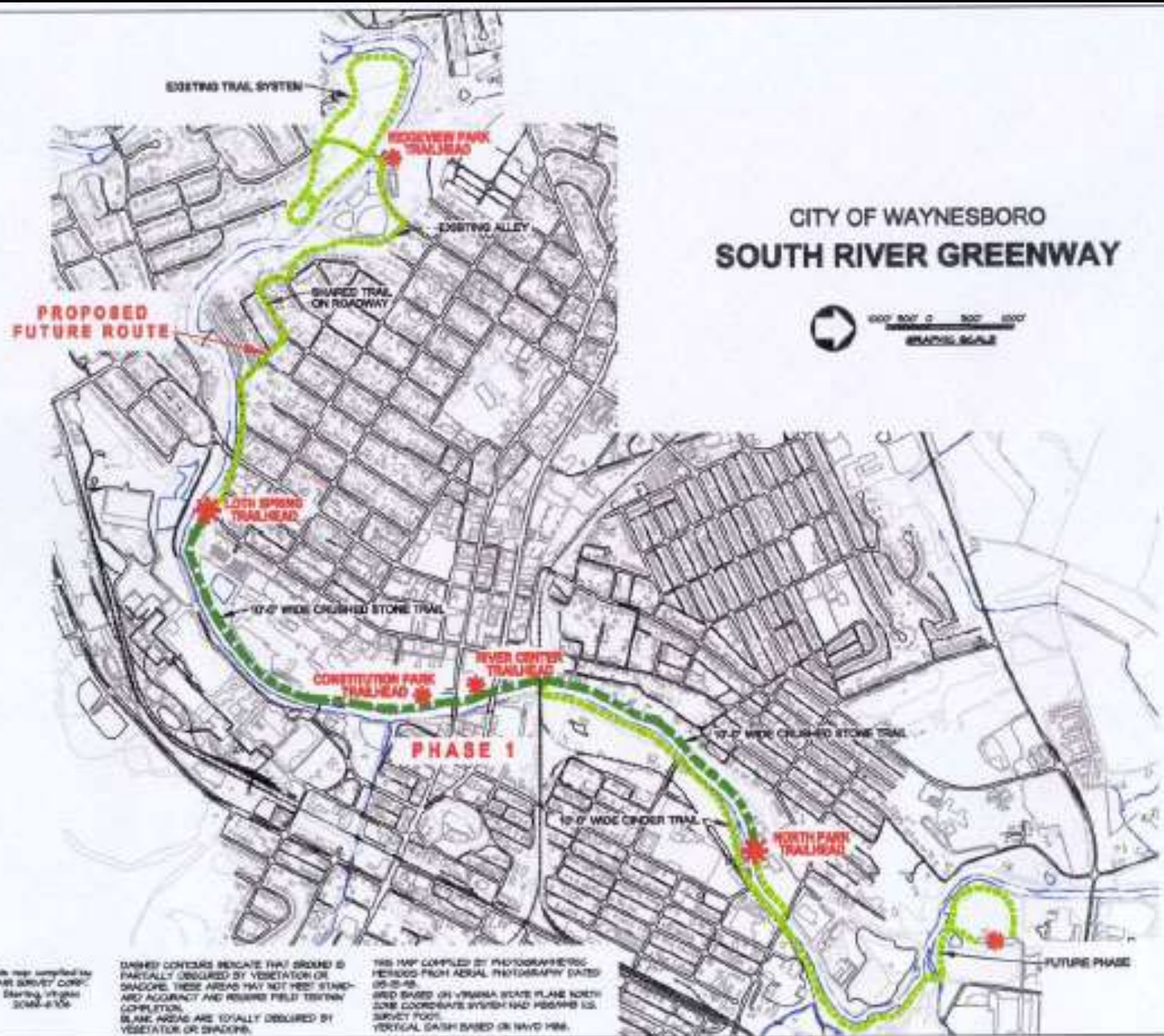




**Waynesboro's South River Greenway**



# CITY OF WAYNESBORO SOUTH RIVER GREENWAY



This map compiled by  
AIR SERVICE CORP.  
Survey: 10/01  
SOM-4-104

DASHED CONTOURS INDICATE THAT GROUND IS  
PARTIALLY OCCUPIED BY VEGETATION OR  
SHADOWS. THESE AREAS MAY NOT REPRESENT  
ACCURATE AND REMAIN FIELD TESTING  
COMPLETION.  
BLANK AREAS ARE TOTALLY OCCUPIED BY  
VEGETATION OR SHADOWS.

THIS MAP COMPILED BY PHOTOGRAPHIC  
METHODS FROM AERIAL PHOTOGRAPHY DATED  
05-25-08.  
GRID BASED ON VIRGINIA STATE PLANE NORTH  
ZONE COORDINATE SYSTEM HAD HEIGHTS U.S.  
SURVEY FOOT.  
VERTICAL DASH BASED ON NAVD 83.

CITY OF WAYNESBORO IMPROVEMENTS  
**SOUTH RIVER TRAIL (Phase 1)**  
CITY OF WAYNESBORO, VIRGINIA

1/8" = 1'-0"	1/4" = 3'-0"
1/2" = 6'-0"	3/4" = 9'-0"
1" = 12'-0"	1 1/4" = 15'-0"
1 1/2" = 18'-0"	2" = 24'-0"

**PLAN**



**CROZET  
TUNNEL**

**FUTURE  
SUNSET  
PARK**



Basic City

Waynesboro

**CONSTITUTION  
PARK**

**NORTH  
PARK**

**BASIC  
PARK**

**RIDGEVIEW  
PARK**

Waynesboro, VA

Image © 2010 Commonwealth of Virginia  
© 2010 Google  
Data SIO, NOAA, U.S. Navy, NGA, GEBCO

©2008 Google Ave

# *Pathway To Success.....*

**Patience** - the capacity to accept or tolerate delay

**Persistence** - continuing firmly in a course of action in spite of difficulty or opposition

**Passion** - a strong feeling of enthusiasm about doing something

# GREENWAY TRAIL PHASE 1

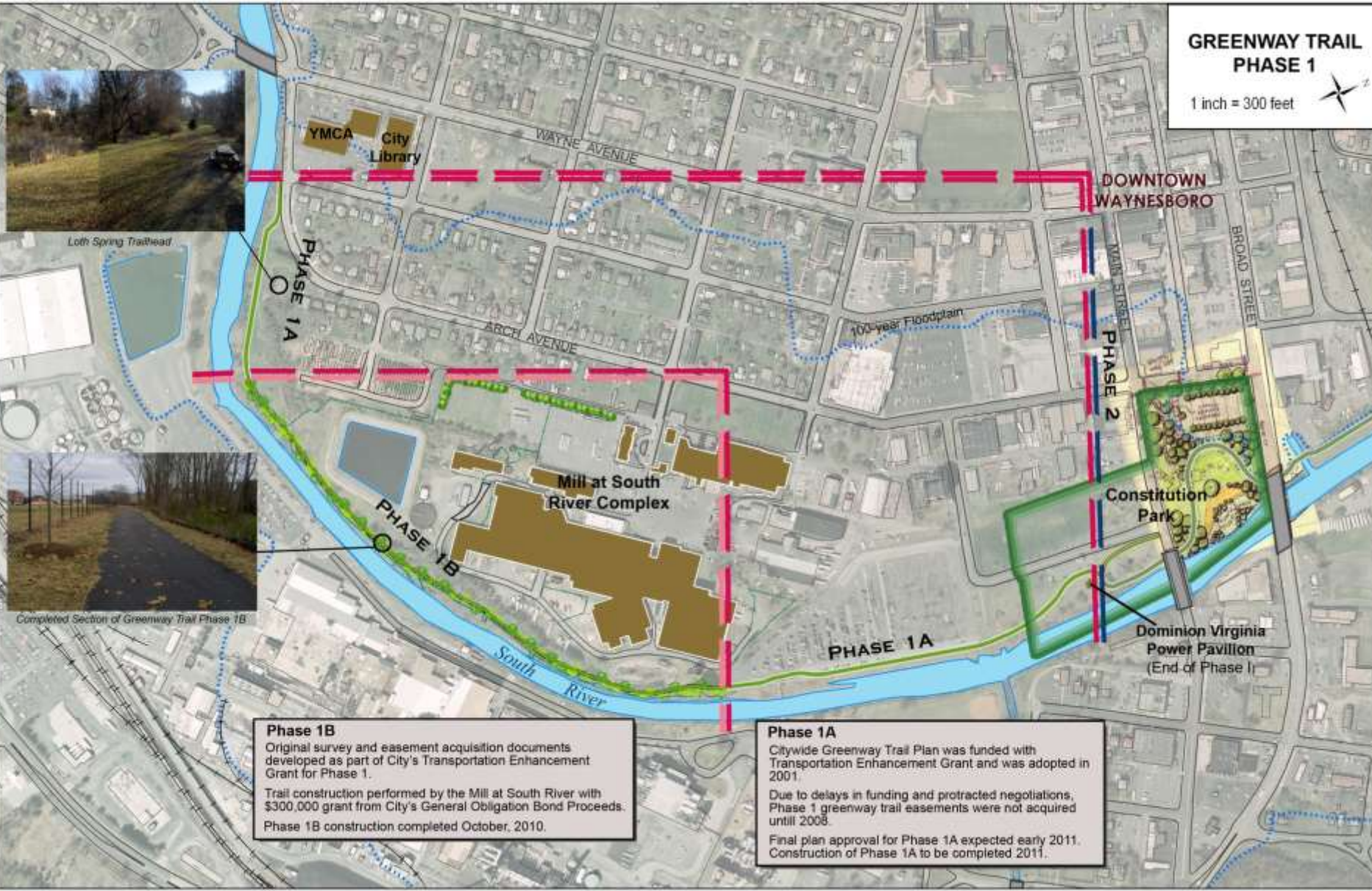
1 inch = 300 feet



Loth Spring Trailhead



Completed Section of Greenway Trail Phase 1B



**Phase 1B**  
Original survey and easement acquisition documents developed as part of City's Transportation Enhancement Grant for Phase 1.  
Trail construction performed by the Mill at South River with \$300,000 grant from City's General Obligation Bond Proceeds.  
Phase 1B construction completed October, 2010.

**Phase 1A**  
Citywide Greenway Trail Plan was funded with Transportation Enhancement Grant and was adopted in 2001.  
Due to delays in funding and protracted negotiations, Phase 1 greenway trail easements were not acquired until 2008.  
Final plan approval for Phase 1A expected early 2011.  
Construction of Phase 1A to be completed 2011.

DOWNTOWN  
WAYNESBORO

YMCA City Library

WAYNE AVENUE

ARCH AVENUE

100-year Floodplain

PHASE 2

Mill at South River Complex

PHASE 1B

PHASE 1A

Constitution Park

Dominion Virginia Power Pavilion (End of Phase I)

South River

BROAD STREET

MAIN STREET

## Patience

the capacity  
to accept or  
tolerate delay

*Van tour of Rivanna - 1997*  
*First mile built - 2012*

15 years



## BUSINESS

# DuPont sells textiles unit to Koch Industries

**Randall Chase Associated Press**

Published 11:01 p.m. ET Nov. 17, 2003 | Updated 5:48 a.m. ET Nov. 18, 2003



DOVER, DEL. - DuPont has agreed to sell its Invista textiles unit, which makes nylon and spandex, to two Koch Industries subsidiaries for \$4.4 billion in cash, the companies announced Monday.

The deal with KED Fiber Ltd. and KED Fiber LLC is expected to close in the first half of next year and is subject to government approval, officials said.

DuPont chairman and chief executive Charles Holliday Jr. described the sale as a "bittersweet milestone" for the 201-year-old company, which created the synthetic fiber industry in 1938 with the introduction of nylon.

"The fibers businesses have been an important part of DuPont for many decades," he said. "However, marketplace realities dictate they can best realize their potential as part of a company like Koch, which is fully committed to Invista and the markets it serves."





# South River Greenway Dedication Ceremony March 17, 2012 – St. Patrick's Day











PHASE 2A CONSTR. @ CONSTITUTION PARK  
2A - South Greenway Section

FUTURE CONSTITUTION  
PARK IMPROVEMENTS  
RETENED FROM GREENWAY

FUTURE CONSTITUTION  
PARK IMPROVEMENTS  
SEPARATE FROM GREENWAY



Greenway Trail  
Phase 2A Improvements Project  
City of Waynesboro, Virginia

McCormick  
Taylor LPDA



Center Mill Road  
SOUTH RIVER  
WREN BAPTIST CHURCH  
UNIVERSITY OF VIRGINIA CENTER FOR THE STUDY OF THE AFRICAN DIASPORA



























# GROOVIN' at the GREENWAY

*Music Series @ Constitution Park*  
*THURSDAYS IN JUNE & JULY, 6-8 PM*

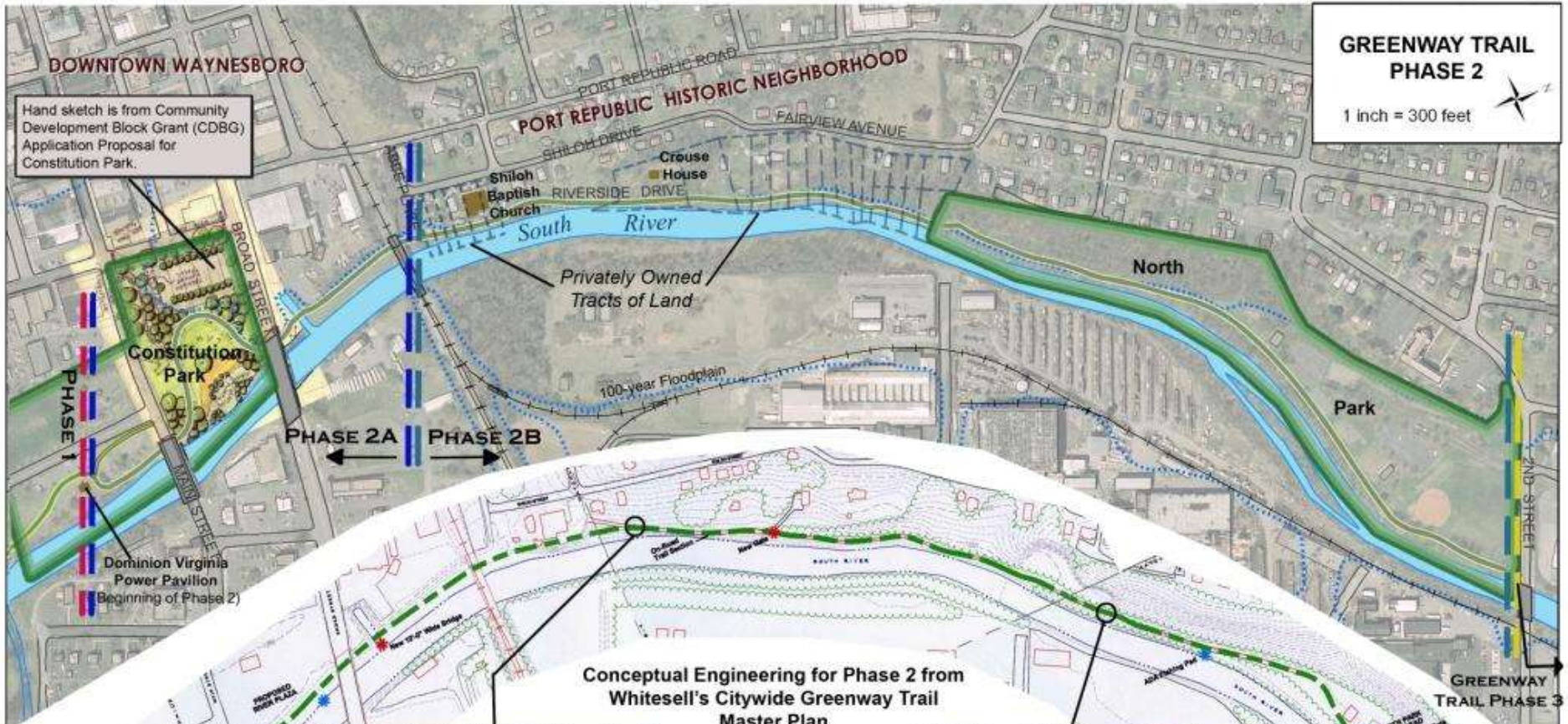


**DOWNTOWN WAYNESBORO**

Hand sketch is from Community Development Block Grant (CDBG) Application Proposal for Constitution Park.

**GREENWAY TRAIL PHASE 2**

1 inch = 300 feet



PHASE 2A PHASE 2B

**Conceptual Engineering for Phase 2 from Whitesell's Citywide Greenway Trail Master Plan**



Publicly Maintained Section of Riverside Drive



Old Road Bed of Riverside Drive in North Park



**Shiloh Baptist Church**



# Unlikely Partners.....



1976:  
Mercury discovered on-site and in fish; fish consumption advisory established



2001 - 2012:  
Extensive field investigations

2014:  
South River enters into regulatory process



1930 1940 1950 1960 1970 1980 1990 2000 ★ 2010 2016 2020 ★ 2022

1929-1950  
Mercuric sulfate used in acetate rayon fiber production



1982-2001  
MNA – Monitoring Period



2001:  
DuPont and Virginia Department of Environmental Quality launch collaborative effort

2014:  
Baseline monitoring begins

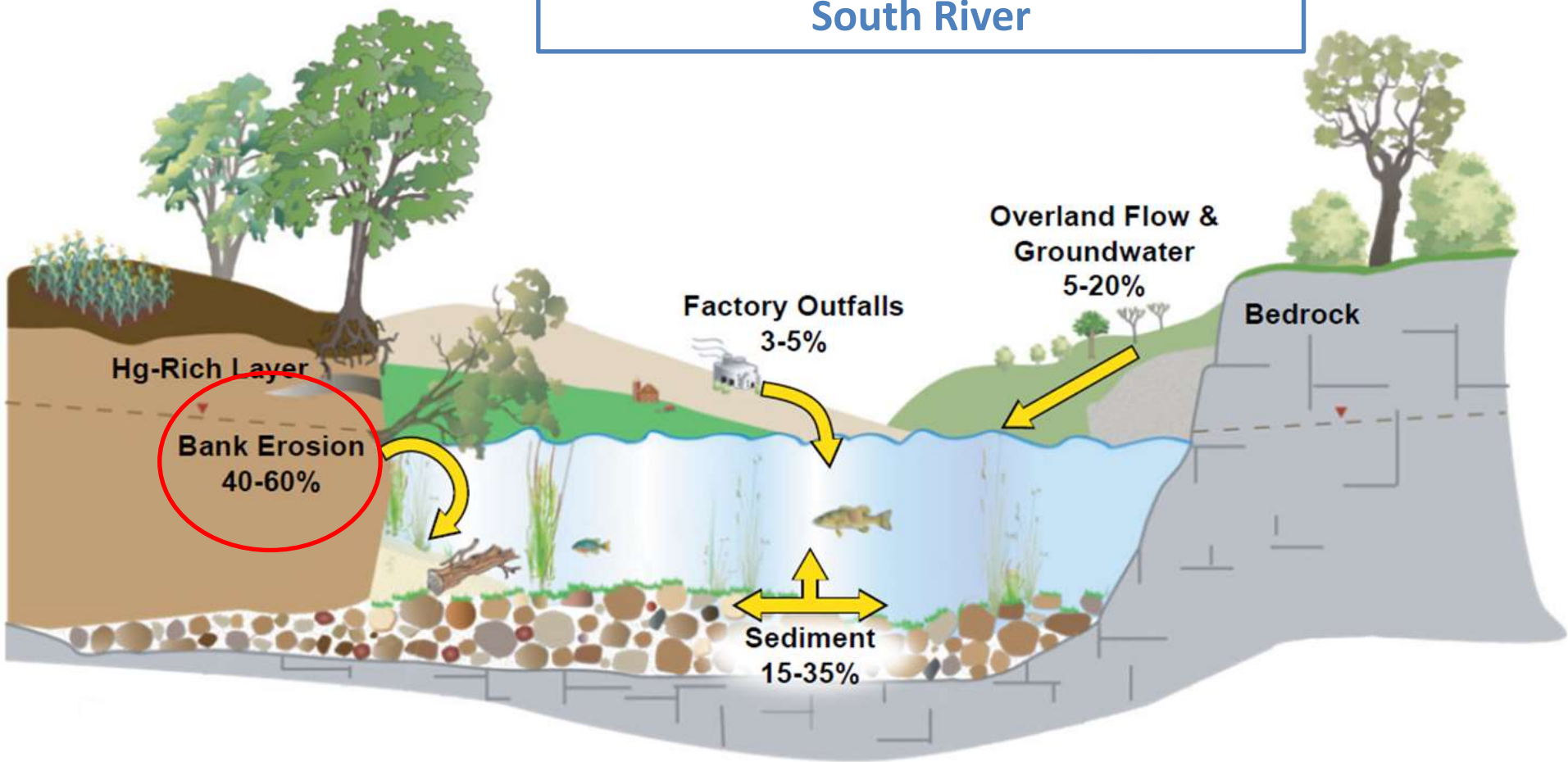
2016-2020  
Phase 1 Interim Measures Construction

2020-2022+  
Remedy Effectiveness Monitoring/Adaptive Management

## THE SOUTH RIVER MERCURY STORY

South River: CONCEPTUAL SITE MODEL SCHEMATIC

Mercury loading to the South River



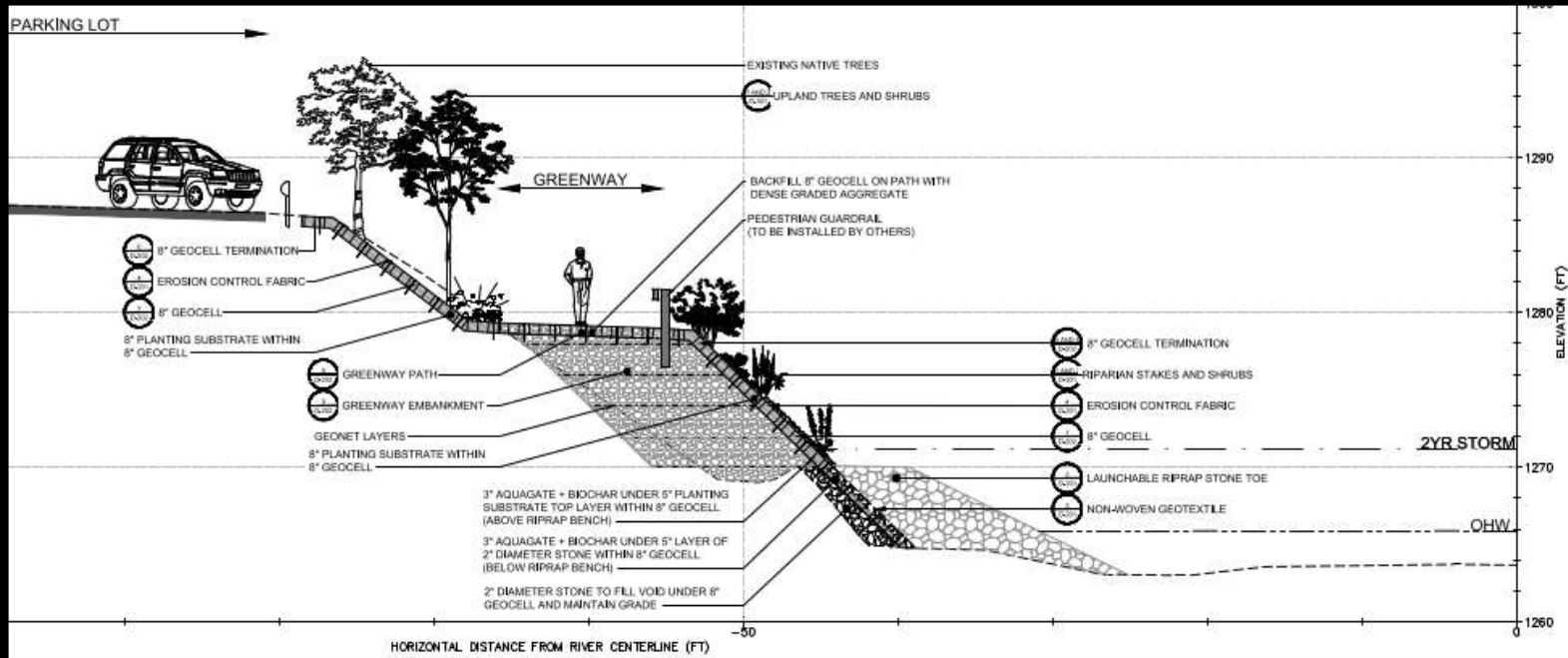
# Excavating Contaminated Soil





# Placing the Geocell

















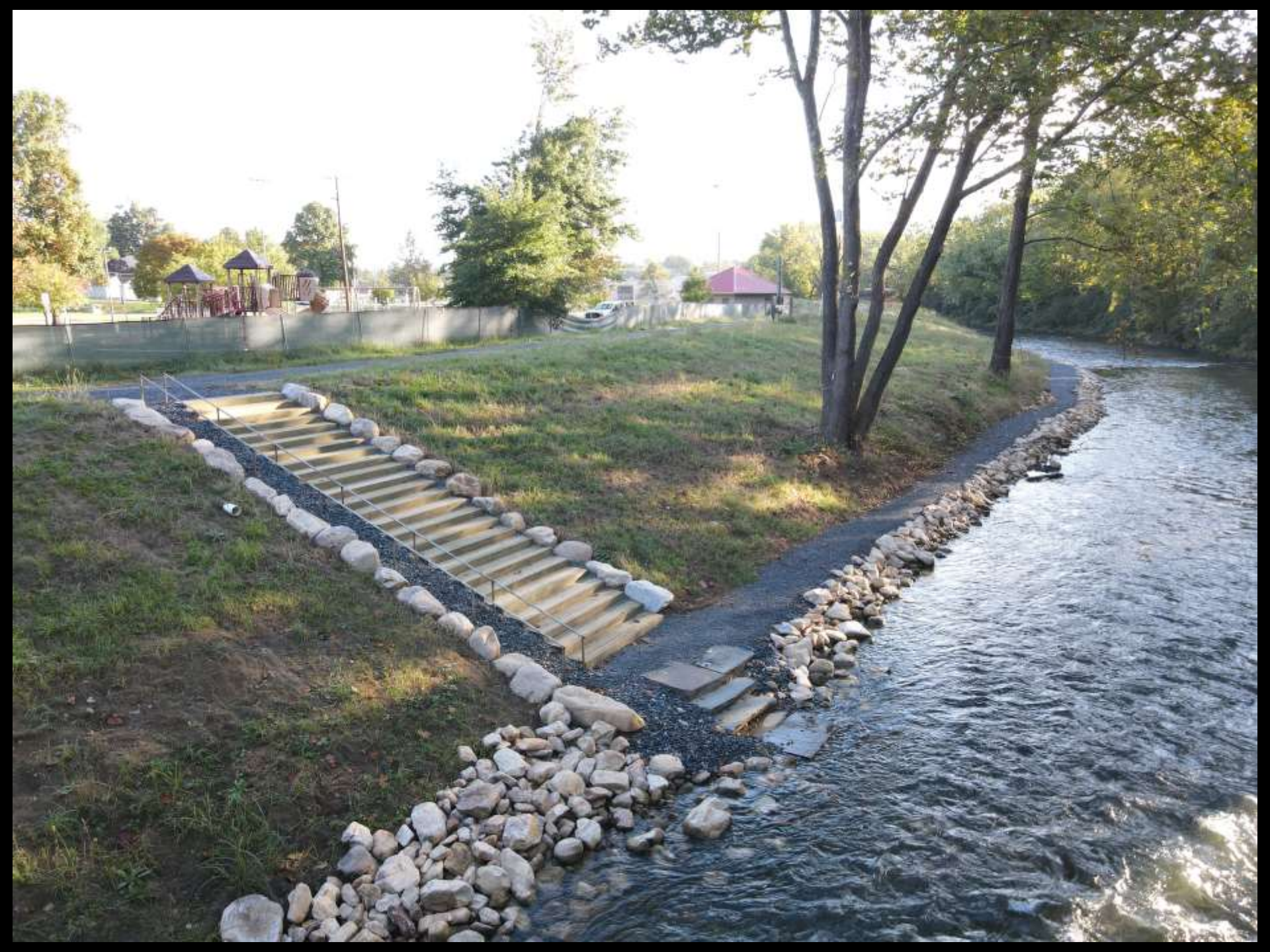














# Virginia Scenic Rivers PROGRAM



## 50 YEARS

1970-2020




### Waynesboro Water Trail

Ridgeview Park to Basic Park

As the South River meanders through Waynesboro, it flows north past city neighborhoods, streets, parks, and downtown. Paddle this route and you will see it look a little different. This is the very definition of a water trail. This is the Waynesboro Water Trail, a portion of the greater South River Blazing.

As you float the river's gentle current you will experience Waynesboro as never before. There are towns on this short journey when you lose yourself in the feeling of wilderness, if not for the sound of a passing train pulling you back to the city beyond the river's edge. History and industry peek out from the shoreline, history of the foundation on which the city was built. There is a beauty in the city and down here... from the river, it becomes clear.

Explore the Waynesboro Water Trail.



### Guidelines

- Know the river level. Low water could mean a lot of portaging / carrying your boat.
- Leave the bilge empty. Avoid the river. Being clean is bad weather.
- Bait your worms, when in your boat and portage. How will you transport it from the river?
- Look out for kayakers. The river is always changing.
- Please yourself. • Please others.
- Carry a map & cell phone. • Respect landowners.
- Leave what you find.

### Be Safe, Be Kind.

- Pack in & pack out.
- Respect wildlife.
- Respect landowners.

### Shuttling



1. Use a shuttle. Daily operation and fast back to the city.
2. Use a vehicle. Bring a second vehicle or the carpooler or a car sharing for one other person from shuttle.
3. Use a car and a bike. Toward a bike at the river end and then back to the park for the vehicle when you're done.
4. Use a friend to pick you up when you're finished paddling.

*"The water which nurtured you should be used to nurture you and keep you healthy."*

**Take your paddle!**  
Paddle opportunities are available from north to south from the river, and we'll have you back!



### Change Your Perspective. Paddle Waynesboro.

Don't worry. We'll be there to assist you with your paddle trip. [www.waynesborowatertrail.org](http://www.waynesborowatertrail.org)

If having a boat of your own, check the regulations. [dgi.virginia.gov](http://dgi.virginia.gov)

There is a rich environmental heritage in the South River watershed. From the river to the mountains, the water is a source of life.

*When Paddling Comes Naturally*

**Waynesboro Water Trail**  
Ridgeview Park to Basic Park

**Waynesboro Parks & Recreation**  
[www.waynesborovirginia.org](http://www.waynesborovirginia.org)  
540-942-6232



**Persistence** –  
continuing firmly  
in a course of  
action in spite  
of difficulty or  
opposition









# FUTURE MEADOW



Help this site grow...

**PLEASE KEEP OFF**



Waynesboro  
Virginia















# Greenway users by the numbers.....

## Master Summary

Download as  Excel  CSV

Year	Site	Jan	Feb	Mar	Apr	May	Jun	Jul	Aug	Sep	Oct	Nov	Dec	ADT†	ADT†x365	Days with data
2019	GW_LothSpgs <sup>D</sup>								5,149*	4,681	2,981	2,530	2,424	108.159	39,478	132
2020	GW_LothSpgs <sup>D</sup>	2,603	2,718	5,508	6,792	7,673	7,552	6,404	6,204	6,075	5,884	4,700	3,168	178.363	65,281	366
2021	GW_LothSpgs <sup>D</sup>	3,489	2,785	5,695	5,799	6,054	6,046	5,859	5,317	5,276	5,158	3,223	3,458	159.340	58,159	365
2022	GW_LothSpgs <sup>D</sup>	1,976	3,070	4,196	4,425	4,887	5,597	4,877	5,075	5,184	4,394	3,287	2,325	135.049	49,293	365
2023	GW_LothSpgs <sup>D</sup>	3,452	3,695	3,929	4,865	5,440	5,604	6,001	6,198					161.251	58,857	243

ADT† = Average Daily Traffic

\* = based upon that month's ADT [Learn more](#) Indicates months with less than 6 days of data.

<sup>D</sup> = divide by 2 applied [Learn more](#)

**Over 172,000 visitors in 3 years**  
**Average 58,000 + / year**

Did you know the TRAFx Infrared Counter can be easily converted to the TRAFx Infrared Trail Counter?  
To learn more about TRAFx versatility click [here](#).

Trail Counter



Brochure FAQs Gallery

TRAFx Infrared Trail Counter

- Counts people on trails, paths, and sidewalks
- Advanced microelectronic design
- High-quality infrared scope
- Compact, unobtrusive, camouflaged design
- **Very long battery life (up to 10 years)**
- Large storage capacity (millions of counts)
- Maximum range: 6m (20ft.)
- Built for outside: -40C (-40F) to +55C (131F)
- Very low operating costs (<\$1/year for batteries)
- Mount on a tree, or put inside a low-cost, lockable electrical box
- Field-proven, Generation 4 design (>10 year history)
- Used from Alaska to Australia, in remote and urban areas

The TRAFx Infrared Trail Counter counts people — walkers, hikers, joggers, inline skaters, horseback riders, cyclists, etc. — on trails, paths and sidewalks. It senses and detects the infrared wavelength that people emit.

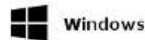
Unlike other trail counters, it does not require a receiving unit or reflector to operate. This results in a very compact, unobtrusive design, that reduces risk of vandalism. The TRAFx Infrared Trail Counter also works well in winter conditions on snowshoe, ski and snowmobile trails. It uses three standard "AA size" alkaline batteries and has very long battery life. ([read more...](#))

Dock

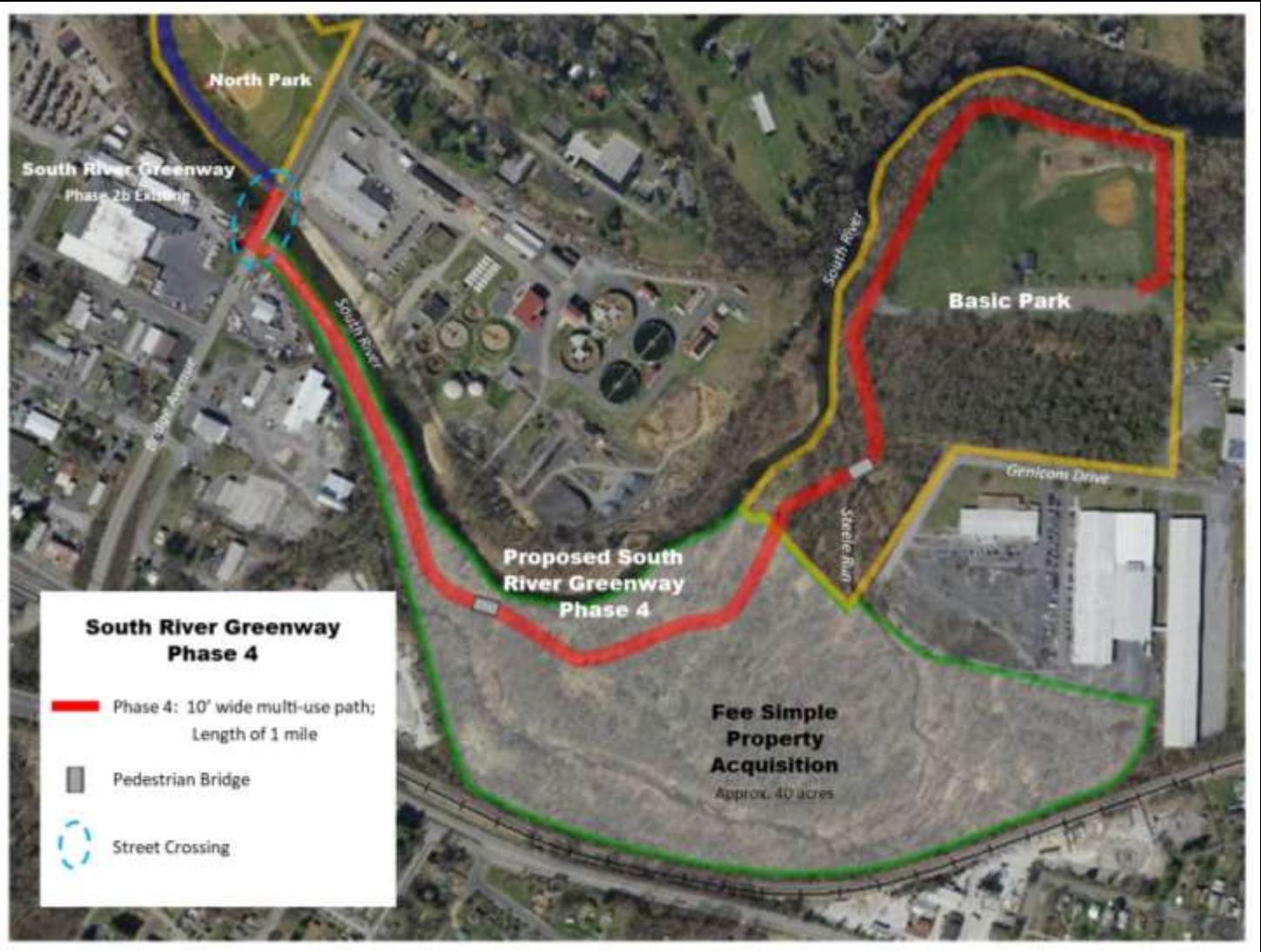


The TRAFx Dock is an integral and essential part of a TRAFx counting system, used for configuring and downloading counters. Features of the G4 Dock include:

- Download counters in the field without a laptop
- Very easy to use; greatly simplifies data collection
- Large storage (holds data from over a hundred counters)
- Auto-ON/OFF design
- **Up to 5 years battery life**

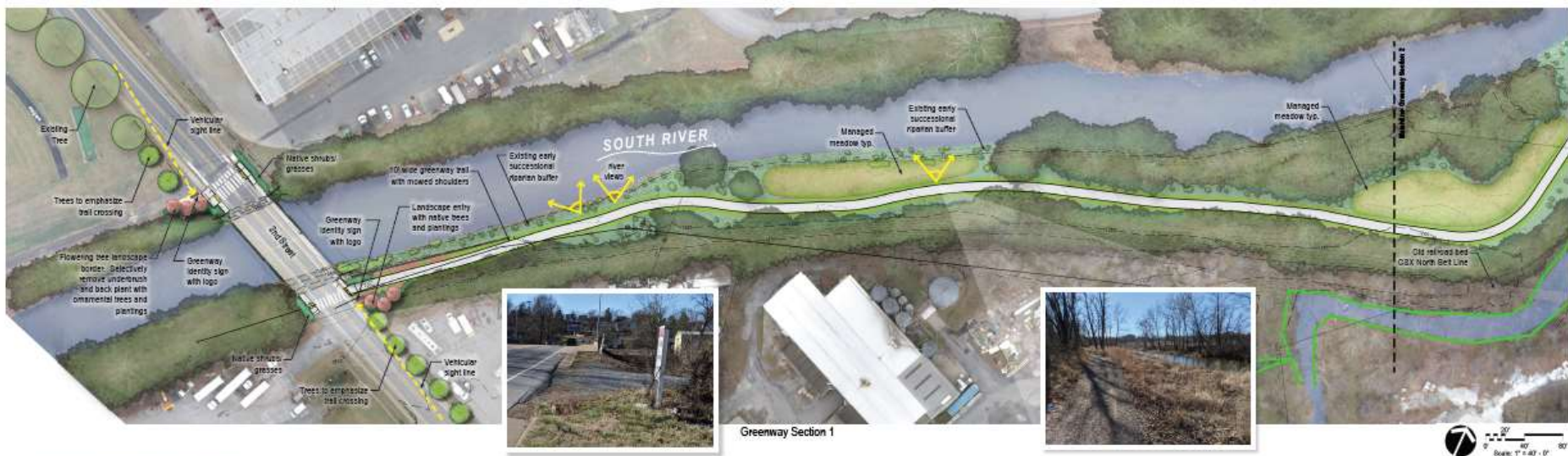






Greenway  
Phase 4  
North to  
Basic  
Final ROW  
phase

2024  
opening



Greenway Section 1



Greenway Section 2

**SOUTH RIVER GREENWAY**  
CITY OF WAYNESBORO, VA



Conceptual Plan  
February 28, 2023



# *Waynesboro South River Greenway*

## *Start Small: Dream Big*



Trails Are **“Outdoor”**

*Economic Engines*

**VIRGINIA  
IS FOR  
OUTDOOR  
LOVERS™**



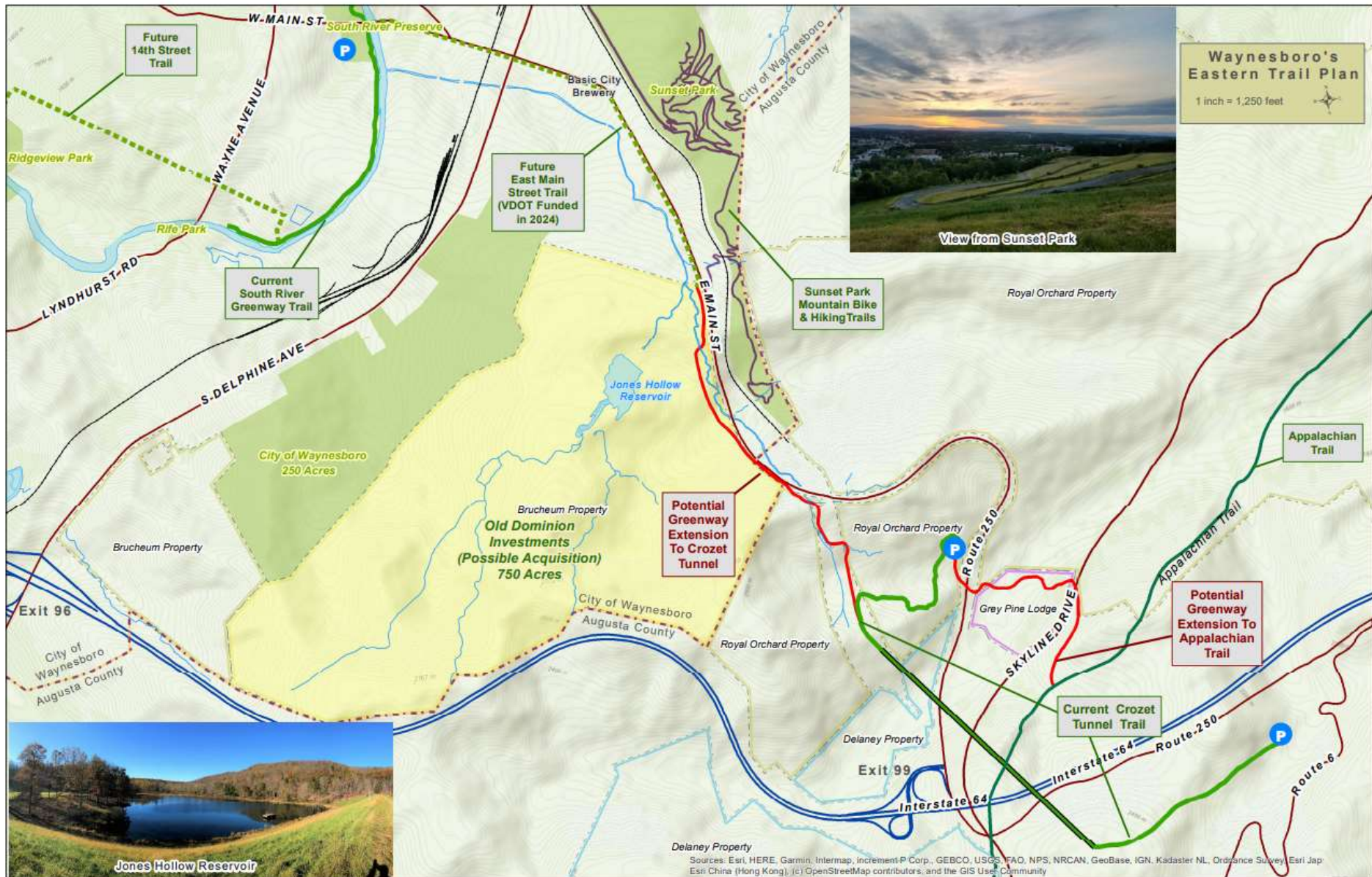


***Passion***  
a strong  
feeling of  
enthusiasm  
about doing  
something





# Rockfish Gateway Trail – EFLAP (Eastern Federal Land Access Program) - \$950,000



Crozet Tunnel

Jones Hollow  
Reservoir

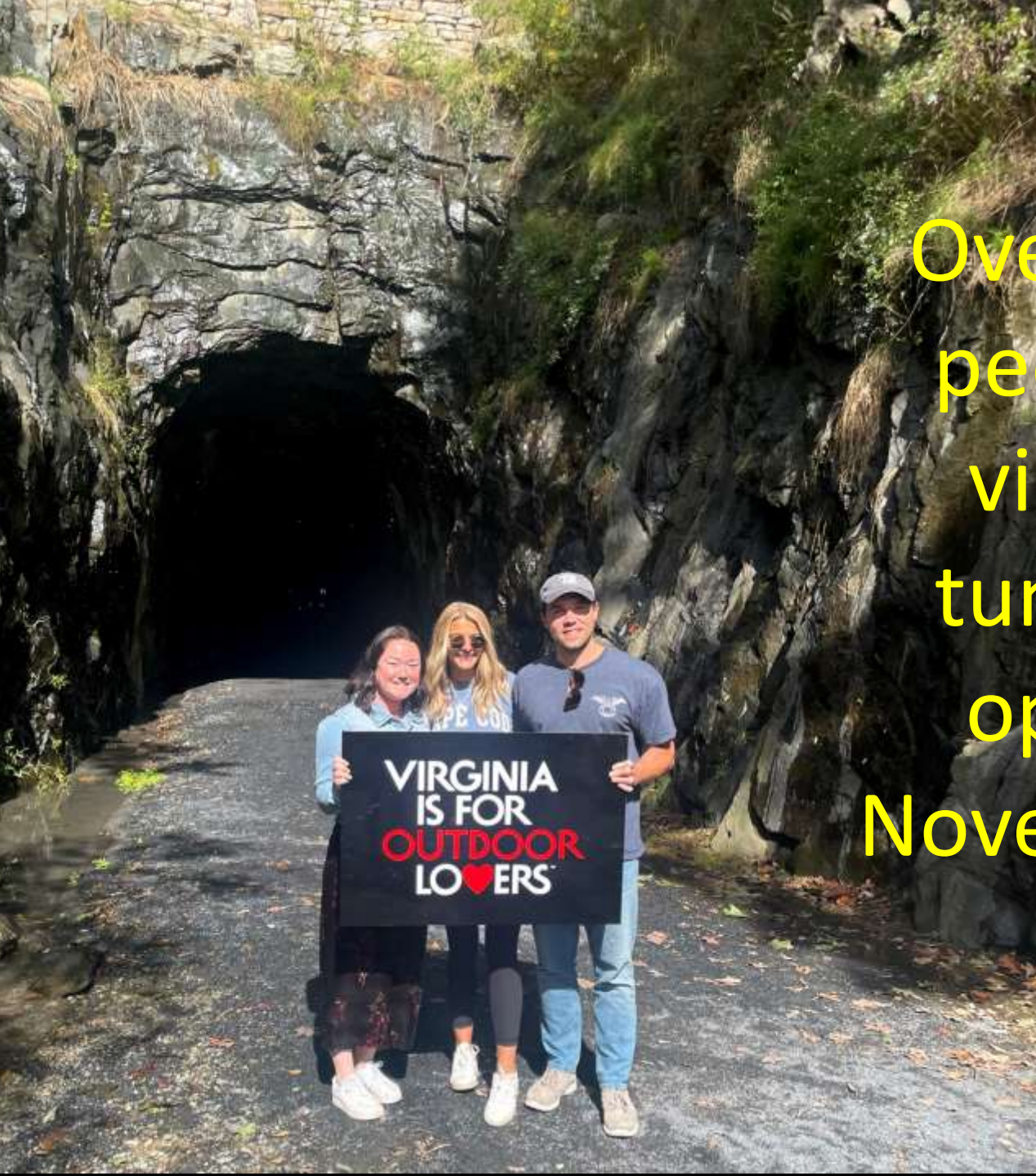


Sunset Park Hiking / Biking trails

# Jones Hollow Reservoir – ½ mile from downtown Waynesboro







Over 257,000  
people have  
visited the  
tunnel since  
opening in  
November 2020







  
**ENTERING**  
  
**SHENANDOAH  
NATIONAL PARK  
ON THE  
SKYLINE DRIVE**  
U.S. DEPARTMENT OF THE INTERIOR  
NATIONAL PARK SERVICE



Sources: Esri, HERE, Garmin, Intermap, Inc, Esri China (Hong Kong), (c) OpenStreetMap





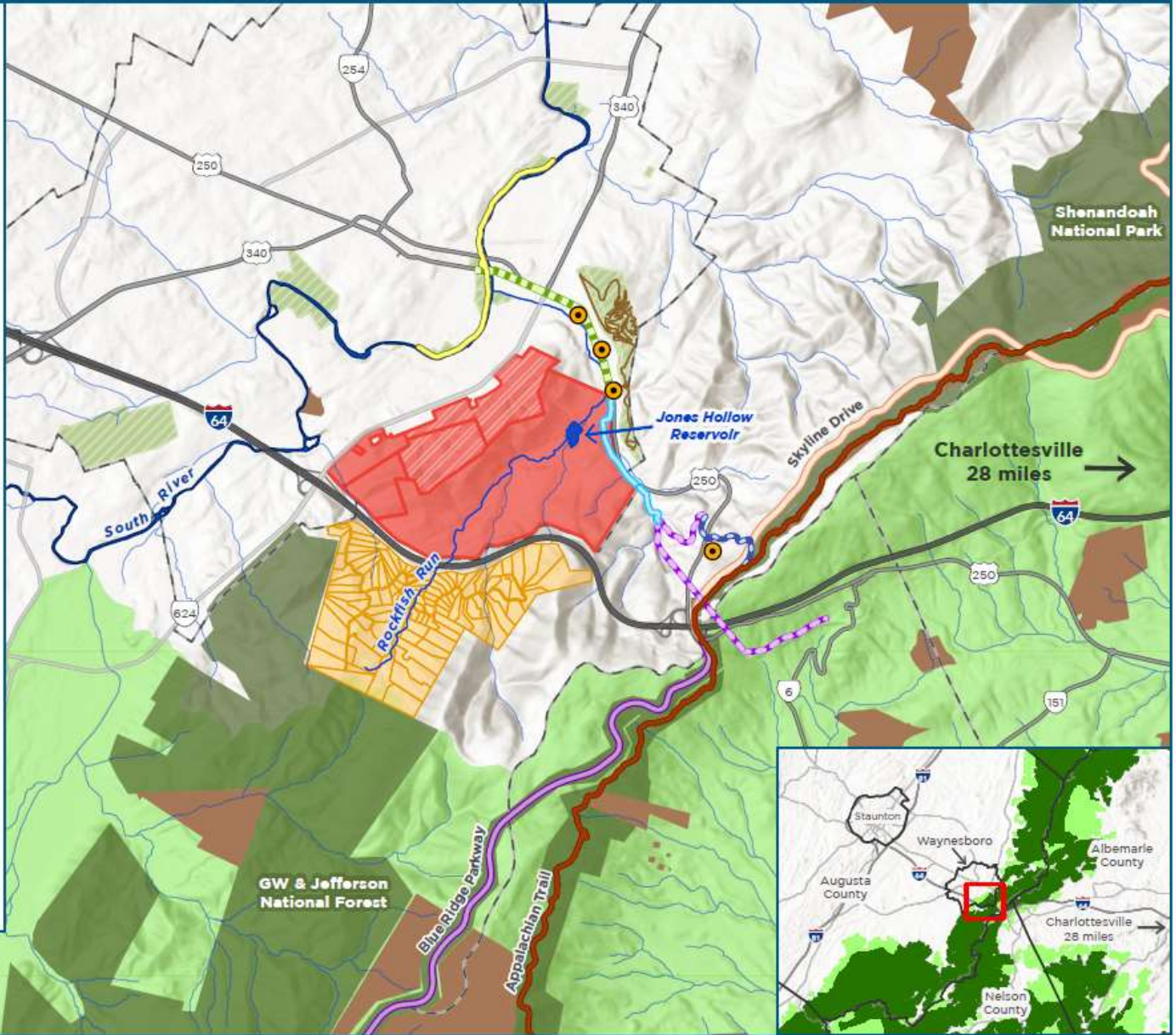
# Jones Hollow State Park (FY25 Forest Legacy Project)



THE CONSERVATION FUND

- Jones Hollow Forest Legacy FY25, Proposed Fee
- Jones Hollow Forest Legacy FY25, Proposed Fee (City)
- South River Greenway Trail
- Blue Ridge Tunnel Trail
- Appalachian Trail
- Proposed City Multi-use Path (VDOT Funded)
- Future Sunset Park Trails
- Proposed Western Portal Trail
- Proposed AT Connector Trail
- Skyline Drive
- Blue Ridge Parkway
- Outdoor Recreation Related Businesses
- Waynesboro City Parks
- Public Conserved Plans
- State Conserved Lands
- Private Conserved Lands
- Forest Legacy Areas
- Chinquapin Subdivision
- Wildlife Biodiversity Resilience Corridors (Inset Map)**
- Corridor
- Buffer

0 0.5 1 Miles

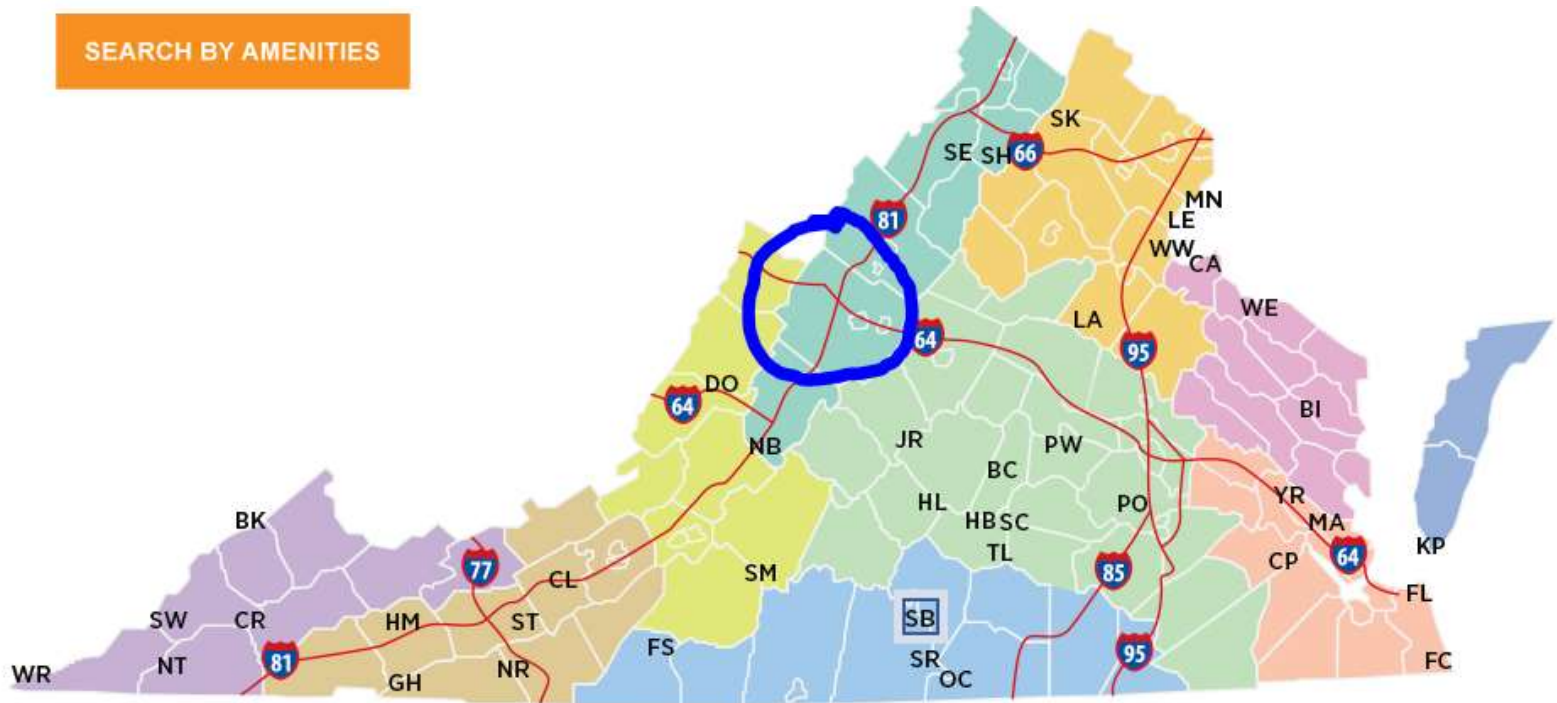


# Find a park



Virginia Department of Conservation and Recreation  
CONSERVE. PROTECT. ENJOY.

SEARCH BY AMENITIES



- |                          |                        |  |   |
|--------------------------|------------------------|--|---|
| Bear Creek Lake (BC)     | Grayson Highlands (GH) | Natural Tunnel (NT)                      | Smith Mountain Lake (SM)                  |
| Belle Isle (BI)          | High Bridge Trail (HB) | New River Trail (NR)                     | Southwest Virginia Museum Historical (SW) |
| Breaks Interstate (BK) * | Holliday Lake (HL)     | Occoneetchee (OC)                        | Staunton River (SR)                       |
| Caledon (CA)             | Hungry Mother (HM)     | Pocahontas (PO)                          | Staunton River Battlefield (SB)           |
| Chippokes(CP)            | James River (JR)       | Powhatan (PW)                            | Twin Lakes (TL)                           |
| Claytor Lake (CL)        | Kiptopeke (KP)         | Sailor's Creek Battlefield Historic (SC) | Westmoreland (WE)                         |
| Clinch River (CR) **     | Lake Anna (LA)         | <b>Seven Bends (SE)</b>                  | Widewater (WW)                            |
| <b>Douthat (DO)</b>      | Leesylvania (LE)       | Shenandoah River (SH)                    | Wilderness Road (WR)                      |
| Fairy Stone (FS)         | Machicomoco (MA)       | Shot Tower (ST)                          | York River (YR)                           |
| False Cape (FC)          | Mason Neck (MN)        | Sky Meadows (SK)                         |   |
| First Landing (FL)       | Natural Bridge (NB)    |  |   |

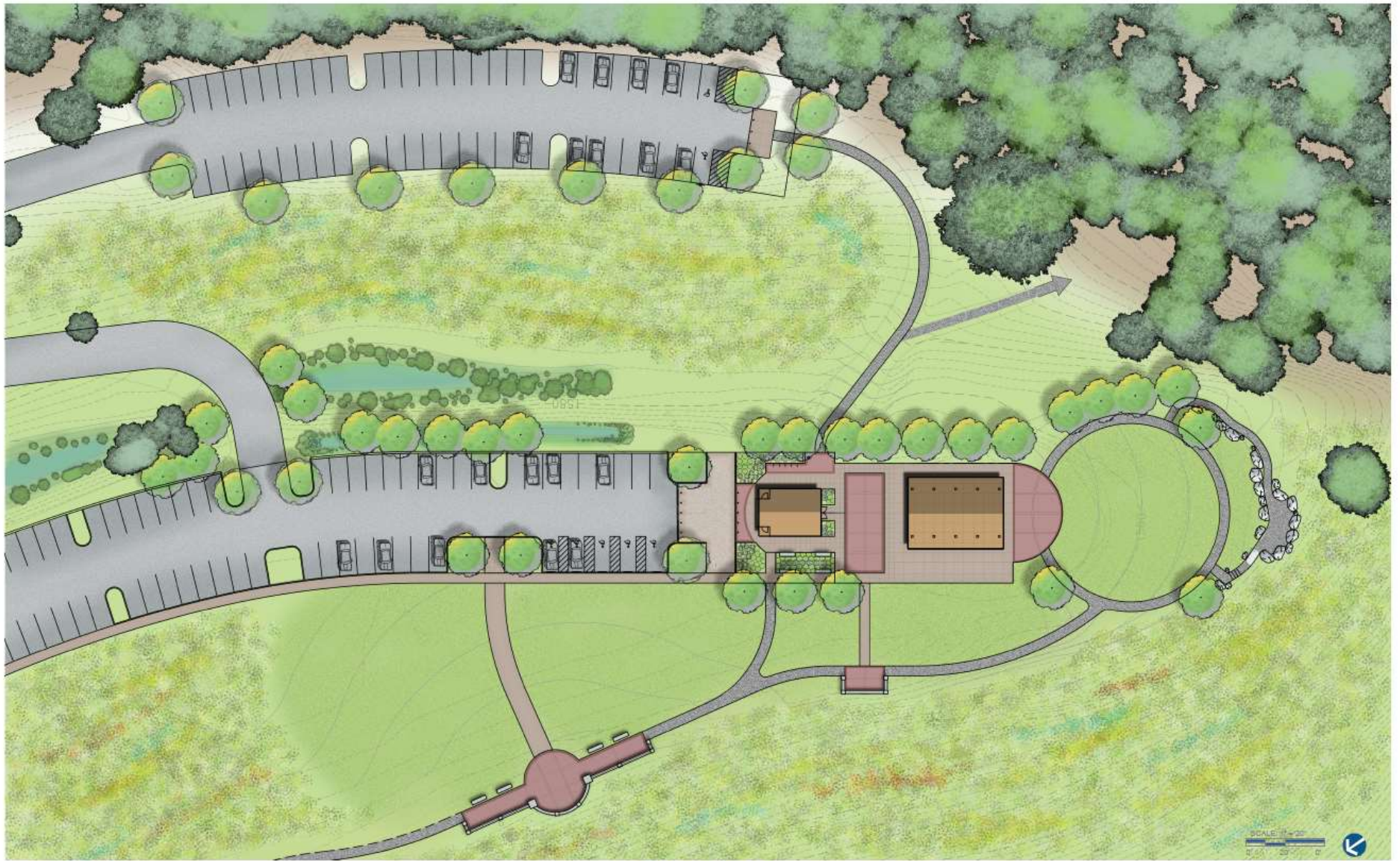




# Sunset Park











C & O STATION,  
BASIC CITY, VA.



CardCow.com



Verge detail

























# *Pathway to success.....*PARTNERS



SHENANDOAH VALLEY BICYCLE  
**COALITION**

- Secured \$30+K in planning and design money
- Grants & donations to date - \$25K to construct 1 mile of mountain bike trails





Sunset Park, Waynesboro, VA  
Trail Accelerator Grant



# SUNSET PARK TRAILS MASTER PLAN

WAYNESBORO, VA

NOVEMBER 2022



## Bike Facilities Suitability Assessment

The methodology for this project included mapping data collection, desktop based GIS analysis, stakeholder and land manager discussions, public engagement, field observations and field design and flagging.

The following elements are identified as key opportunities and constrains when considering the suitability of the site for bike facilities development. Overall, the site was found to provide highly suitable conditions for bike focused infrastructure with progressive options for beginner and intermediate riders. The park facilities being developed by the City will support trailhead infrastructure needs and provide access for the community. Gentle slopes and open hardwood forest offer ample opportunities for locating natural surface trails serving a variety of user types and ability levels.

### Key Opportunities

- 45 acres of intact woodland area
- Close to 200' of elevation gain
- Gentle slopes for beginner terrain
- Park facilities to complement the trail system
- Multiple trailhead access points
- Close to the community

### Key Constraints

- Landfill cap
- Steep fill slopes
- Stormwater structures
- Monitoring wells
- Stream crossings
- Railroad limits connectivity

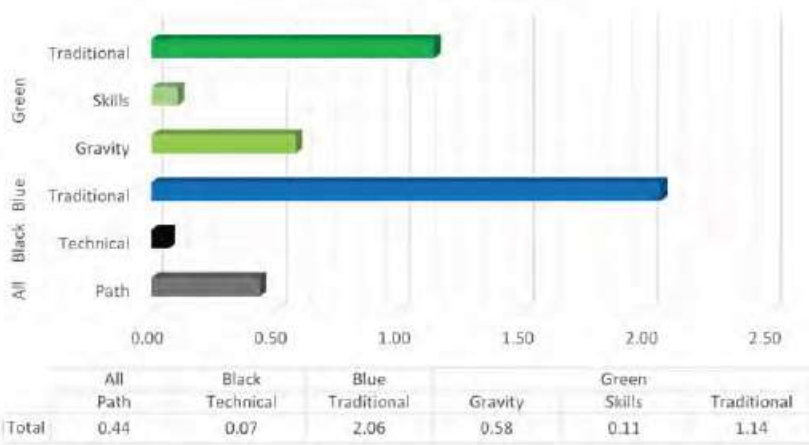


# CONCEPT PLAN

This concept plan seeks to provide engaging activities for park visitors of all ages and ability levels. An initial site assessment was conducted on property with TS joining Waynesboro Parks and Recreation Department Staff to field verify key opportunities and constraints to gain an understanding of how the trail system will integrate with existing and planned park facilities.

During the spring, just over 4 miles of trail corridor was designed and flagged at Sunset Park. The trails types are a mix of gravel path, traditional cross country, bike optimized gravity, and skills trails. The following plan illustrates the planned trail design with a short narrative to describe each segment. Trail corridors were marked with blue, orange, or pink flagging. Intersections were marked with small, corrugated plastic signs that indicate the trail number and flagging color.

Trail Concept by Type



# Custom project website to build enthusiasm interest & take donations

## About Sunset Park in Waynesboro



The Shenandoah Valley Bicycle Coalition is excited to announce a [final trail plan for Sunset Park in Waynesboro, Virginia](#). The plan, developed through a [Trails Accelerator Grant \(TAG\)](#) with the [International Mountain Bicycling Association \(IMBA\)](#), calls for over 4 miles of natural surface singletrack trails on the eastern portion of Waynesboro's soon-to-be-opened Sunset Park.

SEE THE PRESS RELEASE

READ THE SINGLETRACKS.COM STORY

Choose amount ← 0 0 0 0 →

Sunset Park is Shovel Ready for Trails

One-time  Monthly  Annual

Prorated Donations Matching





